

2200 SERIES (Pitch 2.54 mm Right Angle Type)

FEATURE

Insulator Material : PBT UL94V-0
 Contact Material : Phosphor Bronze
 Plating : Selective Gold Plating Over Nickel On Contact Point
 100 μ " Tin Plating On Tail Section
 50 μ " Nickel Underplating

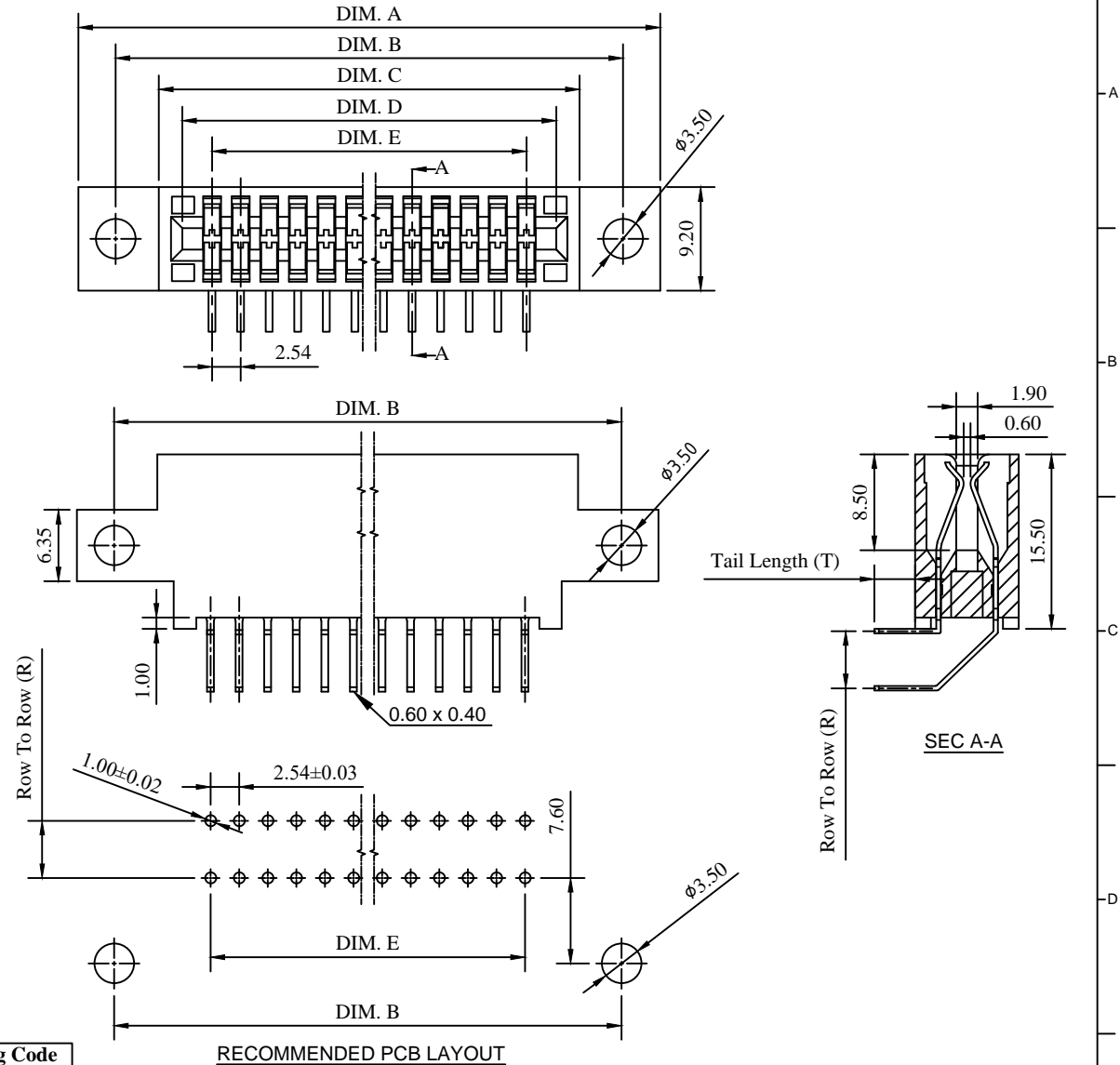
SPECIFICATION

Current Rating : 3 Ampere
 Contact Resistance : 20 milliohms maximum
 Insulation Resistance : 5000 megohms minimum
 Voltage Rating : 800 VAC 1 minute
 Operation Temperature Range : -55°C to +105°C
 Insertion Force : 412 grams max. per pair
 Withdrawal Force : 32 grams min. per pair

ORDERING INFORMATION

2200 - □□□ - □ - □ - □ - □



No. of Contacts Other Custom Options
 Tail Length (T) Plating Code
 Row To Row (R)



No. of Contacts	Dimensions (Dim.)				
	A	B	C	D	E
12/24	51.69	45.09	37.38	33.22	27.94
22/44	77.09	70.49	62.78	58.62	53.34
24/48	82.17	75.57	67.86	63.70	58.42
25/50	84.71	78.11	70.40	66.24	60.96
28/56	92.33	85.73	78.02	73.86	68.58
30/60	97.41	90.81	83.10	78.94	73.66
35/70	110.11	103.51	95.80	91.64	86.36
36/72	112.65	106.05	98.34	94.18	88.90
43/86	130.43	123.83	116.12	111.96	106.68
44/88	133.17	126.57	118.66	114.50	109.22
50/100	148.21	141.61	133.90	129.74	124.46

Tail Length (T)		Row to Row (R)	
A	3.50	A	5.08
B	6.00	B	3.81
C	10.80	C	3.00
		D	2.54

Plating Code	
1	10 μ "
2	G/F
3	3 μ "
4	5 μ "
5	G/F Overall
6	30 μ "
7	Tin Overall
8	15 μ "
9	20 μ "

Title : Customer Drawing	Type : Edgecard Connector	 彩電企業股份有限公司 CHARTRON INCORPORATION								
Part No. : 2200 Series										
Description : Pitch 2.54 mm Edge Card Connector Right Angle Dip Type With Mounting Ear										
Tolerances Unless Otherwise Specified :										
X. ± 0.50	.X ± 0.38	.XX ± 0.25								
X. ° ±	.X ° ±	.XX ° ±								
DWG No. : 010 - 0000 - 522	Date : 01 - Feb. - 2018	 <table border="1"> <tr><th>Dim.</th><th>Scale</th><th>Sheet</th><th>Rev.</th></tr> <tr><td>mm</td><td>N/A</td><td>1 of 1</td><td>J</td></tr> </table>	Dim.	Scale	Sheet	Rev.	mm	N/A	1 of 1	J
Dim.	Scale		Sheet	Rev.						
mm	N/A	1 of 1	J							
APPD. : James C.	CHK. : Connie Z.	DRW. : Bryant C.								